

Super High Resolution Integrated Speed Dome Camera



SPECIFICATIONS

MECHANICAL

Pan	360° Continuous Pan 0.1° to 90°/sec (64 steps proportional to zoom)
Pan Preset Speed	380°/sec, $\pm 0.1^\circ$ Accuracy
Tilt	0.1° to 90°/sec. (64 steps proportional to zoom)
Tilt Preset Speed	150°/sec, $\pm 0.01^\circ$ Accuracy
Weight	Approx. 4.4Kg (10.8 lbs) / Packing : 4.9Kg
Dimensions	236(Ø) x 323.7(H) mm – 166(Ø) dome

ENVIRONMENTAL

Construction	Aluminum
Ingress Protection	IP66 (Outdoor Housing)
Color	Cool gray
Operating Temp	-20°C to 50°C (Fan&Heater power ON)
Storage Temp	-10°C to 50°C (14° F to 122° F)
Humidity	0% to 90% (non-condensing)

FUNCTIONS

Preset	255 points less than 0.1° accuracy
Tour	8 programmable
Pattern	4 patterns for 240 second.
Flip	Digital ON/OFF
Scan	8 (programmable speed and diagonal scan)
Privacy Zone	Programmable up to 16
ID Address	Up to 255 selectable ID (Rotary switch)
Data Communication	RS-485 / RS-422
Protocol	Multiple protocol (PELCO-D/P, WONWOO)
Baud rate	2400, 4800, 9600, 19200, 38400, 57600 bps selectable
Alarm In	8 alarm
Alarm Out	2 relay out
Display	16 Area title

ELECTRICAL

Power	21~28VAC 60Hz / 50Hz(Power adaptor not included)
Camera	18.0W
Heater	33W or 62.7W, Fan Power Consumption: 3.4W
RS-422, 485	Dip Switch setting

USER CONNECTIONS

RS-485, 422	RS-422, 485 + / - Optional Control Data
Video connection	BNC
Alarm Inputs	8 Programmable
Relay Out	2 Dry Contact Output Rating: 2A @30VAC

CERTIFICATION

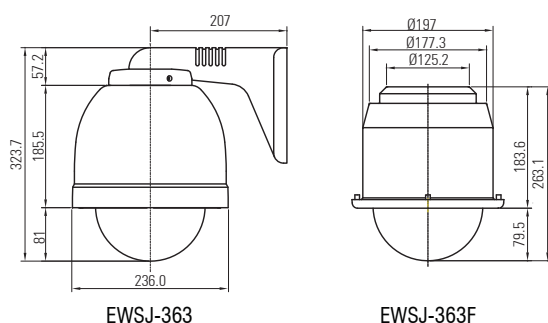
CE, FCC CLASS A, RoHS

FEATURES

- 1/4" 613K pixels SONY Super HAD dual scan CCD
- 650TV lines of most high resolution with 612,688 pixel CCD
- Optical 36x power zoom and 32x digital zoom
- Dual scan 512x WDR
- Intelligent detection for baggage removed and loaded
- IP66 Outdoor Application
- Easy interface with DVR, Matrix system and Video Server
- 255 Presets - Pan : 380°/sec $\pm 0.1^\circ$, Tilt : 150°/sec $\pm 0.01^\circ$ Accuracy
- 64 steps proportional to zoom
- 8 programmable Tour
- 4 Pattern
- Digital Auto Flip
- Polycarbonate Dome Cover (166Ø)
- 8 Alarm Inputs(Normal Open or Normal Close), 2 relay out puts
- 8 Auto Scan(Programmable speed and diagonal scan)
- Pan Motion Allows 0.1-90°/sec Pan Speed
- Programmable Privacy Masking(16 Zones)
- RS-422, RS-485 communication support and remote program update
- Multiple protocol
- Built-in Menu System for Setup of Programmable Functions
- Programmable Zoom Speeds
- AC 24V, 1A / AC 24V, 2A(Outdoor Housing)

DIMENSIONS

Unit : mm



Super High Resolution Integrated Speed Dome Camera

CAMERA SELECTION

NTSC	EWSJ-223N	EWSJ-363N
PAL	EWSJ-223P	EWSJ-363P
Image Sensor	1/4" SONY Super HAD II CCD (Double Scan)	1/4" SONY Super HAD II CCD (Double Scan)
Zoom	Optical 22x, Digital 32x	Optical 36x, Digital 32x
Total Pixels	NTSC:1028 (H) x 508 (V) / PAL : 1028 (H) x 596 (V)	NTSC:1028 (H) x 508 (V) / PAL : 1028 (H) x 596 (V)
Scanning system	Interlace	
Scanning Frequency	NTSC:15.734KHz (H), 59.94Hz(V) / PAL: 15.625KHz(H) , 50Hz(V)	
Sync.System	Internal	
Resolution	650TV lines (Color) / 750TV lines (BW)	650TV lines (Color) / 750TV lines (BW)
Min.Illumination	Color DSS :0.001 lux, BW DSS:0.0004 lux / Color :0.5lux, BW:0.2 lux	
Video Output	1.0 Vp-p (75ohm, composite)	
S/N Ratio	More than 50dB(AGC off)	
Focal Length	f=3.9mm~85.8mm (F 1.6 to 3.7)	f=3.4mm~122.4mm (F 1.6 to 4.5)
Focus	Auto / Zoom -Trig / Manual	
Focus Distance	0.1 / 1.0 / 1.5 / 2.5 / 6.0 m	0.1 / 1.3 / 1.8 / 3.0 / 5.0 m
E.Zoom	Off / Max 2x ~32x	
Exposure	Auto / Shutter PRI / Manual	
Gain Control	Off / On (Auo Max 32dB)	
Shutter Speed	NTSC: 1/60 ~1/100,000sec PAL : 1/50~1/100,000sec	
WDR / BLC	Off / WDR / BLC	
Day&Night	Auto / Sens-in / Ext / Day / Night	
White Balance	ATW / One-Push / Indoor / Outdoor / Manual/ Auto	
Image DNR	Off / Manual / Auto	
Privacy Mask	Off / 16 positions	
Communication	Baud Rate : 2400 / 4800/ 9600 /19200 /38400 Protocol : Pelco-D / Pelco-P / VISCA	
Display	Disp Sel / Init Sel / Set Tilt / Set Init Msg / Language	

650TV Lines High Resolution Image

These cameras combine a Sony "Effio" DSP with a 1/4-type Super HAD II CCD®. They achieve a high horizontal resolution of 600~650 TV lines with 611, 688 pixels CCD, enabling reproduction of amazingly clear and detailed images.



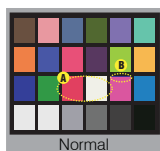
Normal



650TV Line

Color Reproduction

Color reproduction of other camera looks flashy. The "A" portion should be actually yellow and red, however, it washes out due to the white saturation. In addition, the amount of aperture signal is large, making the edges worse (see the "B" portion). Even if the aperture level drops, the images become blurry.



Normal



Color Reproduction

Wide Dynamic Range Image

These cameras incorporate an advanced backlight compensation technology that dramatically improves each camera's dynamic range by 512 times when compared to conventional cameras. Thanks to this new technology, users can capture clear images even in extreme high-contrast lighting environments. The cameras capture the same image twice: first with a normal shutter speed, and then with a high shutter speed. The dark areas captured at normal shutter speed and the bright areas captured at high shutter speed are then combined into one image using an advanced DSP Effio, this clearly reproducing the original scene.



At Normal Speed Shutter

At High Speed Shutter



Simulated Image

Auto ICR

These cameras offers optimal sensitivity in both day and night shooting applications. At a set level of darkness, the IR-cut filter is automatically disabled (ICR ON) and the near-infrared sensitivity is increased. At a set level of brightness, the filter is automatically enabled (ICR OFF). The IR-cut filter automatically engages depending on the ambient light, allowing the camera 24/7 operation in a variety of lighting conditions.

32x E-Zoom

Provide more recognizable picture after E-zoom due to 960 effective vertical pixels.